

GN 191-NI | T-shaped connecting clamps

Stainless steel



- 1
- 2
- 3
- 4
- 5
- 6
- 7
- 8
- 9
- 10
- 11
- 12
- 13
- 14
- 15
- 16
- 17
- 18

MATERIAL

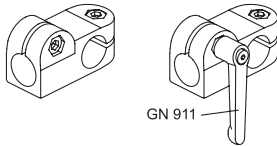
Stainless steel, matte finish.
AISI 304 stainless steel screws and nuts.

FEATURES AND APPLICATIONS

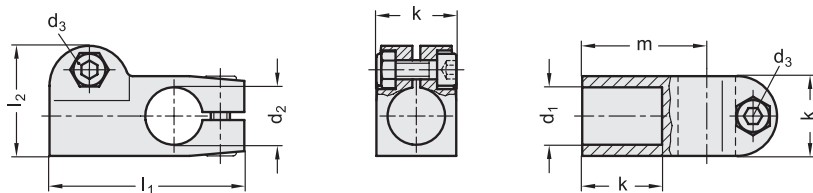
The assembly holes of GN 191-NI connecting clamps allow an excellent match with tubes GN 990 (see page 1954).
The clamping screws d_3 may be replaced by clamping kits GN 911 (see page 1958).

SPECIAL EXECUTIONS ON REQUEST

Different combinations of holes d_1/d_2 .



Conversion Table	
1 mm = 0,039 inch	
d1	
mm	inch
12	0.46
14	0.55
15	0.59
16	0.63
18	0.71
20	0.79



Code	Description	d1	d2	d3	k	l1	l2	m	d3 Clamping kit	⚖️
GN.52033	GN 191-B12-B12-2-NI	12	12	M6	25	61	34.5	39	GN 911-M6-22	240
GN.52053	GN 191-B14-B14-2-NI	14	14	M6	25	61	34.5	39	GN 911-M6-22	220
GN.52073	GN 191-B15-B15-2-NI	15	15	M6	25	61	34.5	39	GN 911-M6-22	210
GN.52093	GN 191-B16-B16-2-NI	16	16	M6	25	61	34.5	39	GN 911-M6-22	200
GN.52113	GN 191-B18-B18-2-NI	18	18	M6	25	61	34.5	39	GN 911-M6-22	175
GN.52123	GN 191-B20-B20-2-NI	20	20	M6	25	61	34.5	39	GN 911-M6-22	160

Connecting clamps
1914



Models all rights reserved in accordance with the law. Always mention the source when reproducing our drawings and photos.

